



April 2016 - Revision C
Quick Coupling Division
 8145 Lewis Road
 Minneapolis, MN 55427
 phone 763 544 7781
 fax 763 544 3418

SUBSEA COUPLING SOLUTIONS

DSP Series Data Sheet



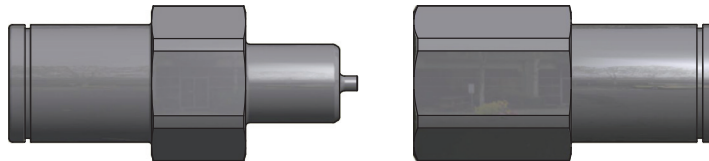
DSP Series poppet style couplings are the most common design used in subsea applications and can be connected and disconnected at full system pressure. PEEK seals allow connection subsea and above water. Their compact design is efficient and reliable.

Features:

- Sizes 1/8" - 1"
- Up to 15,000 psi (1034 bar)
- Poppet valves
- PEEK primary seals
- Parker Nitrile O-rings standard
- Body materials: Nitronic® 60 and 316 SST
- Internal component materials: 316 SST
- Connect/disconnect at rated pressure

Options:

- Various O-ring materials
- Vented valving
- Two-piece body construction
- End configurations: NPT, JIC (others available upon request)
- Alternate body and component materials



Size	Working Pressure*** (psi/bar)	Rated Working Depth** (ft/m)	Cv per Coupling Half	Separation Force (lb/1000 psi & N/100 bar)	Water Ingress Per Connect (ml)	Length* (in/mm)	Min. Plate Bore Diameter* (in/mm)
1/8"	15,000/1034	10,000/3050	0.4	200/1291	0.4	Male: 2.82/71.6	.875/22.23
						Female: 2.43/61.7	
1/4"	12,500/862	10,000/3050	1.0	310/2000	1.2	Male: 2.84/72.1	.938/23.83
						Female: 2.43/61.7	
3/8"	10,000/690	10,000/3050	1.4	440/2839	2.7	Male: 3.14/79.8	1.203/30.56
						Female: 3.06/77.7	
1/2"	10,000/690	10,000/3050	2.8	700/4517	4.2	Male: 3.22/81.8	1.438/36.53
						Female: 3.29/83.6	
1"	5000/345	10,000/3050	9.9	2075/13,400	34	Male: 4.80/122	2.375/60.33
						Female: 5.06/128.6	

Data given is representative of the coupling series. Individual couplings may vary based on specific configuration of fittings/optional features.

* Minimum bore diameter and length are reference. May change for a specific plate configuration.

** Mate/demate rated depth of 6560ft/2000m.

*** Max pressure rating dependent on end configuration.